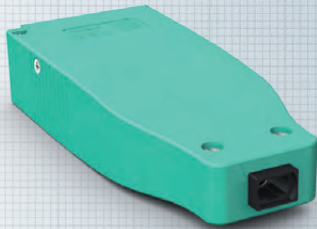


# H.D.S. MPO Module



The H.D.S. FO is designed for fiber optic connections in data centers. It is ideal for cabinet-to-cabinet connections or attaching consolidation points.

The entire cable bundle is split inside the module housing and connected at the factory directly to the LC duplex modules. This means that no additional connection is required in the module, which in turn results in significantly less attenuation losses.

Depending on the existing infrastructure, the user can choose between singlemode OS2 as well as multimode fibers OM3 and OM4 as MPO version.

Following cable installation and connection of the MPO cable to the H.D.S. MPO module, both 6-port modules are simply mounted into an H.D.S. installation frame in the distributor cabinet or the floor box. The system offers various racks for 19-inch distributors as well as the floor box. Up to 168 LCD ports on 3 height units can be connected, i.e. up to 18 LCD ports in the sub-floor installation.

Note - the LED blinking function is not supported by the MPO version.

## Standards:

IEEE 802.3; IEC 888; 10GBase-SR/SW; DIS14165-111

## Properties:

### Cable

|                        |  |
|------------------------|--|
| Description            | I-DQ(ZN)H 2x6 XX + 2xAWG26                           |
| Optical data           | OS2; OM3; OM4  |
| Sheath                 | FRNC; Color OS2 yellow; OM3 aqua; OM4 heather violet |
| Flame Retardancy Index | IEC 60332-3  |
| Bending radius (inst.) | 100mm (inst.); 50mm (at rest)                        |
| Max. tensile strength  | 320N   |

### Module

|          |  |
|----------|--|
| Material | Plastic; Color: OM4 heather violet, OM3 aqua; OM2/APC green; OM2/PC blue |
| Jacks    | 6 x LC duplex modules Module + 1 x MPO                                   |

## Optical characteristics:

|                     |  |
|---------------------|--|
| Maximum link length | depends on maximum permitted link length per norm    |
| OM4                 | Attenuation typically <0.25 dB<br>Return loss >35 dB |
| OM3                 | Attenuation typically <0.25 dB<br>Return loss >35 dB |
| OS2/PC              | Attenuation typically <0.35 dB<br>Return loss >45 dB |
| OS2/APC             | Attenuation typically <0.25 dB<br>Return loss >65 dB |

## Environment:

|                  |               |
|------------------|---------------|
| Connection class | IP20          |
| Temperature      | -40°C – +70°C |

| Description         | Part number |
|---------------------|-------------|
| H.D.S. 2x6X9 KH OS2 | on request  |
| H.D.S. 2x6X9 KH OM3 | on request  |
| H.D.S. 2x6X9 KH OM4 | on request  |