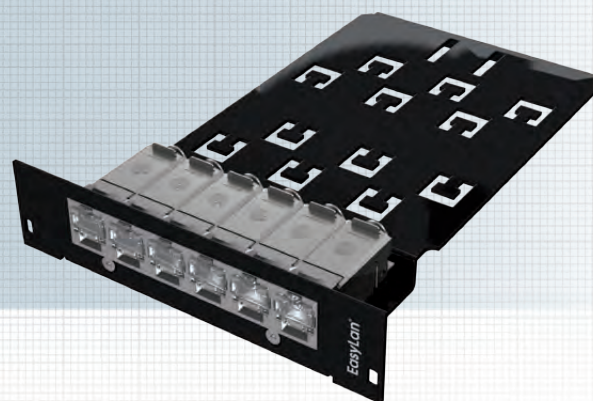
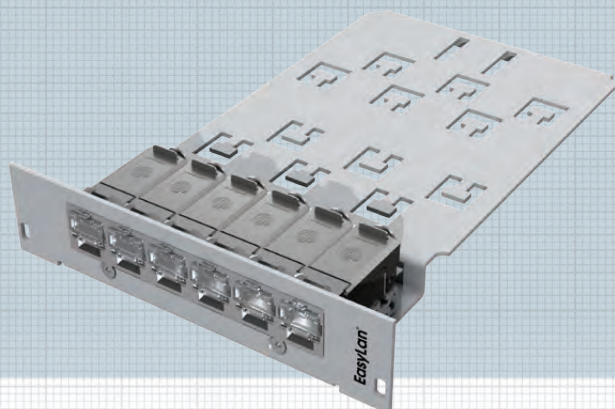


preLink® DC slot module 19" 3U, 6HP / 7HP Cat. 6A EIA/TIA with/without L.E.O. Function, 6-Port



For the preLink® Data Center patch panel Cat. 6A EIA/TIA the data center modules come pre-mounted on a rail and need only be finalized with the relevant cable terminal block. Here, we particularly recommend the pre-assembled data center solutions, which may be ordered as single or multiple cable. The "Light-Emitting-Outlet" (L.E.O.) allows you to easily identify matching cable ends using a detector. The connections on both sides can be made to emit light even in the case of patched data links. This function works with all common, shielded data cables.

Packaging: 1 piece per box

Standards IEC 60603-7-6

Mechanical Properties:

Installation dimension	19" 3U, 7HP or 6HP
Mating force	≤ 30 N
Mating cycles (RJ 45 side)	≥ 750
Mating cycles (other side)	≥ 100
Housing material	Steel plate varnished, heat-treated, RAL 7035
Insulation components material	PC white
Gold plating in contact area	50 μm
Contacting	AWG 27-22
Cable diameter	5 - 9.5 mm

Environmental requirements:

Connection class	IP20
Temperature range	-40°C ... +70°C

Electrical properties:

Contact resistance	≤ 20 mΩ
Insulation resistance between contacts	≥ 500 MΩ
Dielectric withstanding voltage contact – contact	1000 V DC/AC peak
Dielectric withstanding voltage contact – screen	1500 V DC/AC peak
Proof voltage	
contact – screen (L.E.O. variant)	--
Current-carrying capacity at 50°C PoE+ per IEEE 802.3at	1.25 A PoE+

Transmission characteristics:

10 Gbit Cat. 6A	supported EIA/TIA 568B.2-10
-----------------	-----------------------------

L.E.O. Function (Version RJ45 shielded L.E.O.):

Input terminal voltage	12 V AC
Light recognition	≤ 100 m
Light outlet	≤ 3

Description	Ordering Code 6HP		Ordering Code 7HP	
	Housing gray	Housing black	Housing gray	Housing black
6 x RJ45 Cat.6A EIA/TIA, Class E _A , Set with Cable terminal block AWG 24 - AWG 22	CVEESP111E	CVEESP112E	CVEESP211E	CVEESP212E
6 x RJ45 Cat.6A EIA/TIA, Class E _A , Set with Cable terminal block AWG 27 - AWG 26	CVEESP161E	CVEESP162E	CVEESP261E	CVEESP262E
6 x RJ45 Cat.6A EIA/TIA, Class E _A , without Cable terminal block	CVEERP101E	CVEERP102E	CVEERP201E	CVEERP202E
6 x RJ45 Cat.6A EIA/TIA, Class E _A , L.E.O., Set with Cable terminal block AWG 24 - AWG 22	CVEESL111E	CVEESL112E	CVEESL211E	CVEESL212E
6 x RJ45 Cat.6A EIA/TIA, Class E _A , L.E.O., Set with Cable terminal block AWG 27 - AWG 26	CVEESL161E	CVEESL162E	CVEESL261E	CVEESL262E
6 x RJ45 Cat.6A EIA/TIA, Class E _A , L.E.O., without Cable terminal block	CVEERL101E	CVEERL102E	CVEERL201E	CVEERL202E
Dummy plate (3U, 7U)	AVMB0000	AVMB0001	AVMB0001	AVMB0001
preLink® L.E.O. Detector	CKZWD001			