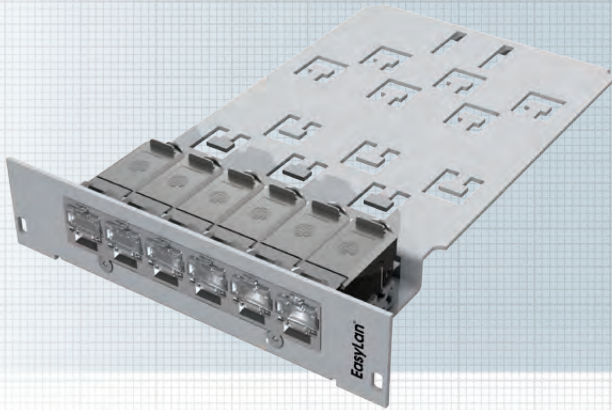


# preLink® DC slot module 19" 3U, 6HP / 7HP Cat. 6<sub>A</sub> ISO/IEC with/without L.E.O. Function, 6-Port



For the preLink® Data Center patch panel Cat. 6<sub>A</sub> ISO/IEC the data center modules come pre-mounted on a rail and need only be finalized with the relevant cable terminal block. Here, we particularly recommend the pre-assembled data center solutions, which may be ordered as single or multiple cable. The "Light-Emitting-Outlet" (L.E.O.) allows you to easily identify matching cable ends using a detector. The connections on both sides can be made to emit light even in the case of patched data links. This function works with all common, shielded data cables.

Packaging: 1 piece per box

**Standards** IEC 60603-7-6

#### Mechanical Properties:

Installation dimension	19" 3U, 7HP or 6HP
Mating force	≤ 30 N
Mating cycles (RJ 45 side)	≥ 750
Mating cycles (other side)	≥ 100
Housing material	Steel plate varnished, heat-treated, RAL 7035
Insulation components material	PC white
Gold plating in contact area	50 μ"
Contacting	AWG 27-22
Cable diameter	5 - 9.5 mm

#### Environmental requirements:

Connection class	IP20
Temperature range	-40°C ... +70°C

#### Electrical properties:

Contact resistance	≤ 20 mΩ
Insulation resistance between contacts	≥ 500 MΩ
Dielectric withstanding voltage contact – contact	1000 V DC/AC peak
Dielectric withstanding voltage contact – screen	1500 V DC/AC peak
Proof voltage	
contact – screen (L.E.O. variant)	--
Current-carrying capacity at 50°C	1.25 A
PoE+ per IEEE 802.3at	PoE+

#### Transmission characteristics:

10 Gbit	supported
Cat. 6 <sub>A</sub>	ISO/IEC 11801 AM1 and AMD2

#### L.E.O. Function (Version RJ45 shielded L.E.O.):

Input terminal voltage	12 V AC
Light recognition	≤ 100 m
Light outlet	≤ 3

Description	Ordering Code 6HP		Ordering Code 7HP	
	Housing gray	Housing black	Housing gray	Housing black
6 x RJ45 Cat. 6 <sub>A</sub> ISO/IEC, Set with Cable terminal block AWG 24 – AWG 22	CVEASP111E	CVEASP112E	CVEASP211E	CVEASP212E
6 x RJ45 Cat. 6 <sub>A</sub> ISO/IEC, Set with Cable terminal block AWG 27 – AWG 26	CVEASP161E	CVEASP162E	CVEASP261E	CVEASP262E
6 x RJ45 Cat. 6 <sub>A</sub> ISO/IEC, without Cable terminal block	CVEARP101E	CVEARP102E	CVEARP201E	CVEARP202E
6 x RJ45 Cat. 6 <sub>A</sub> ISO/IEC L.E.O., Set with Cable terminal block AWG 24 – AWG 22	CVEASL111E	CVEASL112E	CVEASL211E	CVEASL212E
6 x RJ45 Cat. 6 <sub>A</sub> ISO/IEC L.E.O., Set with Cable terminal block AWG 27 – AWG 26	CVEASL161E	CVEASL162E	CVEASL261E	CVEASL262E
6 x RJ45 Cat. 6 <sub>A</sub> ISO/IEC L.E.O., without Cable terminal block	CVEARL101E	CVEARL102E	CVEARL201E	CVEARL202E
Dummy plate (3HP, 7HP)	AVMB0000	AVMB0001	AVMB0001	AVMB0001
preLink® L.E.O. Detector	CKZWD001			