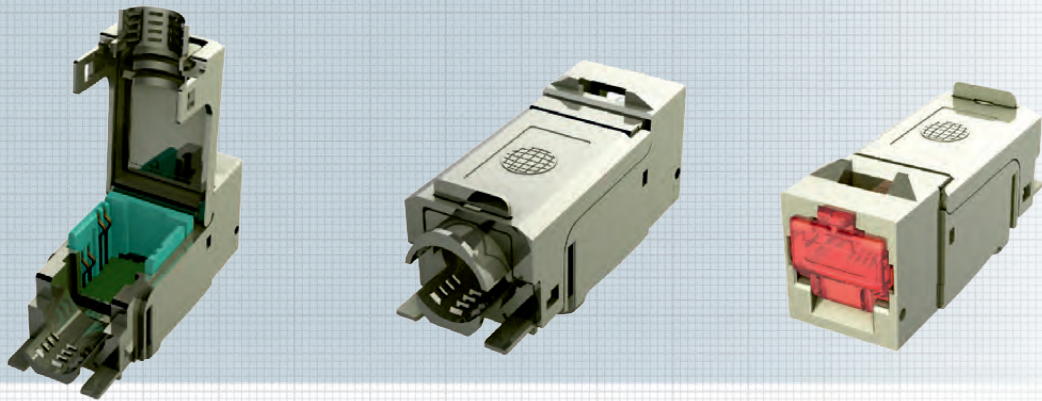


preLink® RJ45 Keystone Module L.E.O. Cat. 6_A ISO/IEC, shielded



The RJ45 socket module can be easily snapped onto the preLink® cable connection module. The resulting complete unit consisting of an assembled preLink® cabling link and preLink® RJ45 Keystone module meets the standard ISO/IEC 11801 (EN 50173) for permanent links. The preLink® cable connection module is available in two versions: transparent yellow for installation cable with up to four pairs in the range of AWG 24 – AWG 22, and transparent white for flexible cable with up to four pairs in AWG 27 – AWG 26. All available four-wire and eight-wire data cables can be connected using both these modules. Innovative IDC contacts ensure contacting in 10 Gigabit technology which remains stable over the long term and is resistant to vibration. The nickel plated die-cast zinc socket module ensures high packing density due to its compact design.

The "Light Emitting Outlet" (L.E.O.) allows you to easily identify matching cable ends using a detector. The connections on both sides can be made to emit light even in the case of patched data links. This function works with all common, shielded data cables.

Packaging unit: 24 units per carton.

Standards:

Connector Standard	IEC 60603-7-51
--------------------	----------------

Mechanical Properties:

Installation dimension	19.3 x 14.7 mm
Mating force	≤ 30 N
Mating cycles (RJ45 side)	≥ 750
Mating cycles (opposite side)	≥ 100
Housing material	nickel-plated die-cast zinc
Insulation components material	PC aqua opaque
PCB material	FR 4

Gold plating in contact area	50 μ"
Contacting	AWG 27-22; depending on the terminal used
Cable diameter	5 – 9.5 mm

Environmental requirements:

Connection class	IP 20
Temperature range	-40 °C ... +70 °C

Electrical properties:

Contact resistance	≤ 20 mΩ
Insulation resistance between contacts	≥ 500 MΩ
Dielectric withstanding voltage contact – contact	1000 V DC/AC peak
Current-carrying capacity at 50°C	1.25 A
PoE+ per IEEE 802.3at	Suitable for Power over Ethernet+

Transmission characteristics:

10 Gbit Class E _A	Supported ISO/IEC 11801 AM1 and AMD2, Link length > 5 m
Cat. 6 _A	ISO/IEC 11801 AMD2
GHMT	Link certification Class E _A with cable: - Draka UC 1500 Cat 7 _A - Draka UC 900 Cat 7 Initial sample certified

L.E.O. Function:

Input voltage	12 V AC
Light detection	≤ 100 m

Accessories:

preLink® L.E.O. Detector	page 12
--------------------------	---------

Description	Ordering Code
preLink® RJ45 Keystone Cat. 6 _A ISO/IEC L.E.O. incl. cable terminal AWG 24 – AWG 22	CKLAS010
preLink® RJ45 Keystone Cat. 6 _A ISO/IEC L.E.O. incl. cable terminal AWG 27 – AWG 26	CKLAS020
preLink® RJ45 Keystone Cat. 6 _A ISO/IEC L.E.O. without cable terminal	CKLAO100
preLink® L.E.O. Detector	CKZWD001