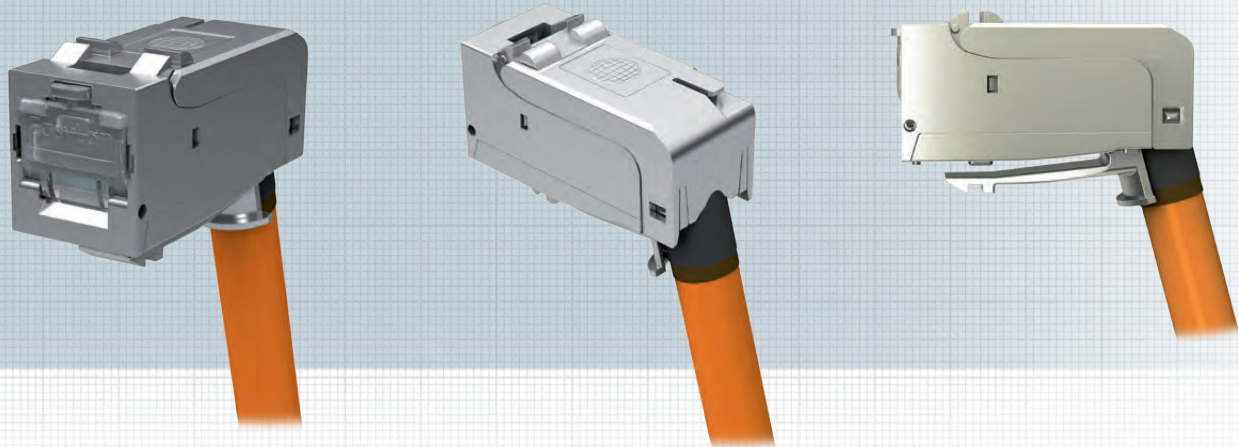


fixLink® SL RJ45 Keystone Module shielded Cat. 6_A (ISO/IEC) angled

IN STOCK



With the fixLink® SL RJ45 Keystone module, the user receives a top-quality RJ45 socket module specially developed for applications with space constraints. The 75° cable exit makes the module especially suitable for use in data outlets and cable installation in cavities. The minimal 27mm installation depth permits a virtually unlimited variety of applications. The fixLink® SL RJ45 Keystone module can be assembled in under a minute using a side cutter. The freely accessible contact zone ensures perfect assembly quality and the associated transmission performance. 360° shield removal only requires the integrated cover to be clicked into place, eliminating time-consuming attachment of a cable tie. The special contact geometry, in connection with 50 μ" gold plating ensures PoE+ per IEEE 80.3at under all conditions. The housing material consists of nickel-plated die-cast zinc and consequently meet the highest mechanical and environmental requirements. Use with the multi-design module holder permits combination with all switch ranges. Various certifications (current list: www.easylan.de) from independent test laboratories round out the highest quality demands of the fixLink® SL Keystone module. The fixLink® SL Keystone modules are delivered in an environmentally friendly cardboard box.

Connector standard: IEC 60603-7-51

Mechanical Properties:

Mating cycles ≥ 750
 Housing material nickel-plated die-cast zinc
 Gold plating in contact area 50 μ"

Contacting AWG 27-22
 Cable diameter 5-9 mm

Environmental requirements:

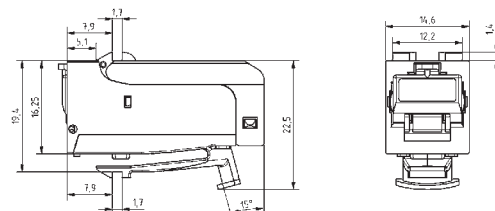
Connection class IP 20
 Temperature range -40° C to +70° C

Electrical properties:

Contact resistance ≤ 20 mΩ
 Insulation resistance between contacts ≥ 500 MΩ
 Dielectric withstanding voltage contact – contact 1000 V DC/AC peak
 Dielectric withstanding voltage contact – screen 1500 V DC/AC peak
 Current-carrying capacity at 50° C 1.25 A
 PoE+ acc. to IEEE 802.3at PoE+

Transmission properties:

10 Gbit Class E_A supported
 ISO/IEC 11801 AMD1 and AMD2, link length > 1 m
 Cat. 6_A ISO/IEC 11801 AMD2
 GHMT List at www.easylan.de



Description	Ordering Code	
fixLink® SL RJ45 Keystone Cat. 6 _A ISO/IEC for AWG 24-AWG 22, angled	PU: 24 CKWAK007	PU: 1 CKWAK007EP
fixLink® SL RJ45 Keystone Cat. 6 _A ISO/IEC for AWG 27-AWG 26, angled	CKWAKFL7	CKWAKFL7EP