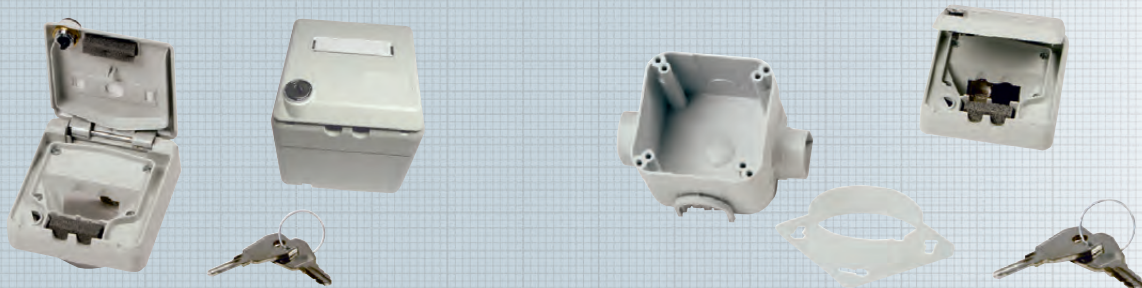


# Surface-Mount Housing IP 44, Lockable, Double

**IN STOCK**



## Surface-Mount Housing set double, lockable IP44

The surface-mounted housing is suitable for installation of preLink® and fixLink® Keystone modules via an adapter. For better strain relief we recommend using cable clamp M25 / 2x8, which is designed to handle two cables with a diameter of up to 8 mm.

### Properties:

Material	Polymer
Color	light gray, similar to RAL 7035
Dimensions (HxWxD)	90 x 90 x 90 mm
Connection class	degree of protection IP44
Packaging unit	1 piece per box

## Flush-mounted housing set double, lockable IP44

The flush-mounted housing is suitable for installation of preLink® and fixLink® Keystone modules via an adapter. The set contains the flush-mounted housing as well as the IP44 flush-mounted outlet.

### Properties:

Material	Polymer
Color	light gray, similar to RAL 7035
Dimensions (HxWxD)	35 x 90 x 90 mm
Connection class	degree of protection IP44
Packaging unit	1 piece per box

Description	Ordering Code
Surface-Mount Housing, IP 44, Lockable, Double	CKVDAP42
Cable Clamp for Surface-Mount Housing Set, Lockable	CKVDZP40
Cable Clamp for Surface-Mount Housing Set, Lockable	CKVDUP42