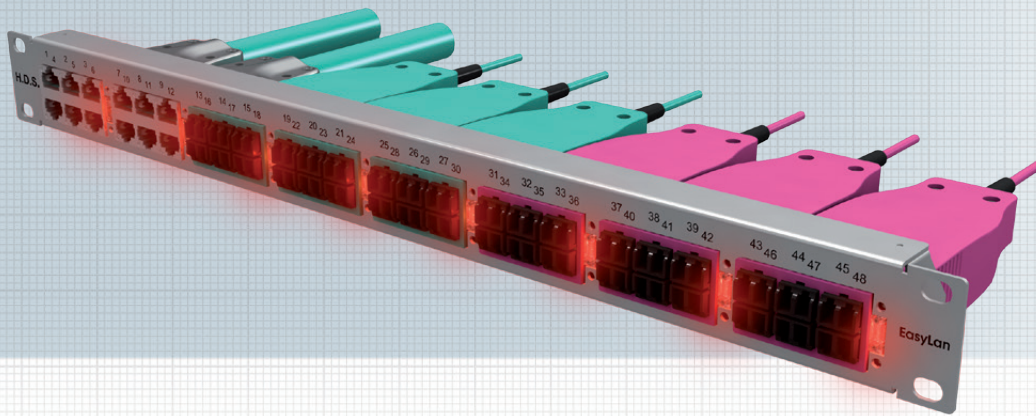


H.D.S. panel for H.D.S. fiber optic and copper modules



Using the H.D.S. panels, you can fasten the H.D.S. fiber optic and H.D.S. copper modules in the patch field of the distribution cabinets. The H.D.S. panels are available in 19" 1U designs.

Standards:

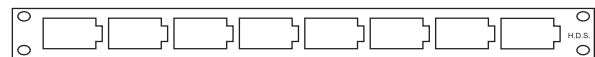
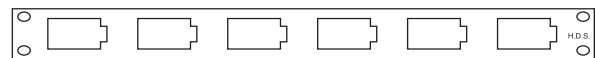
IEC 60603-7, IEC 61754-20, TIA 604-10-A

Specifications:

Installation dimension	19" 1U, depth 35mm
Front	Cutout for up to 8 H.D.S. modules
Housing material	Steel sheet painted RAL 7035
Materials	as per RoHS 2002/95/EG

Environmental requirements:

Connection class	IP20
Temperature	-40°C – +60°C



Designation	Order number
Front plate 6x H.D.S. 1U, RAL 7035	AHVPL0610
Front plate 8x H.D.S. 1U, RAL 7035	AHVPL0810
Blind plate for H.D.S. cutout	AHVZMB001